

INFORMATION MEMORANDUM



Toolern Vale - Vic



PERFECT FUTURE INVESTMENT



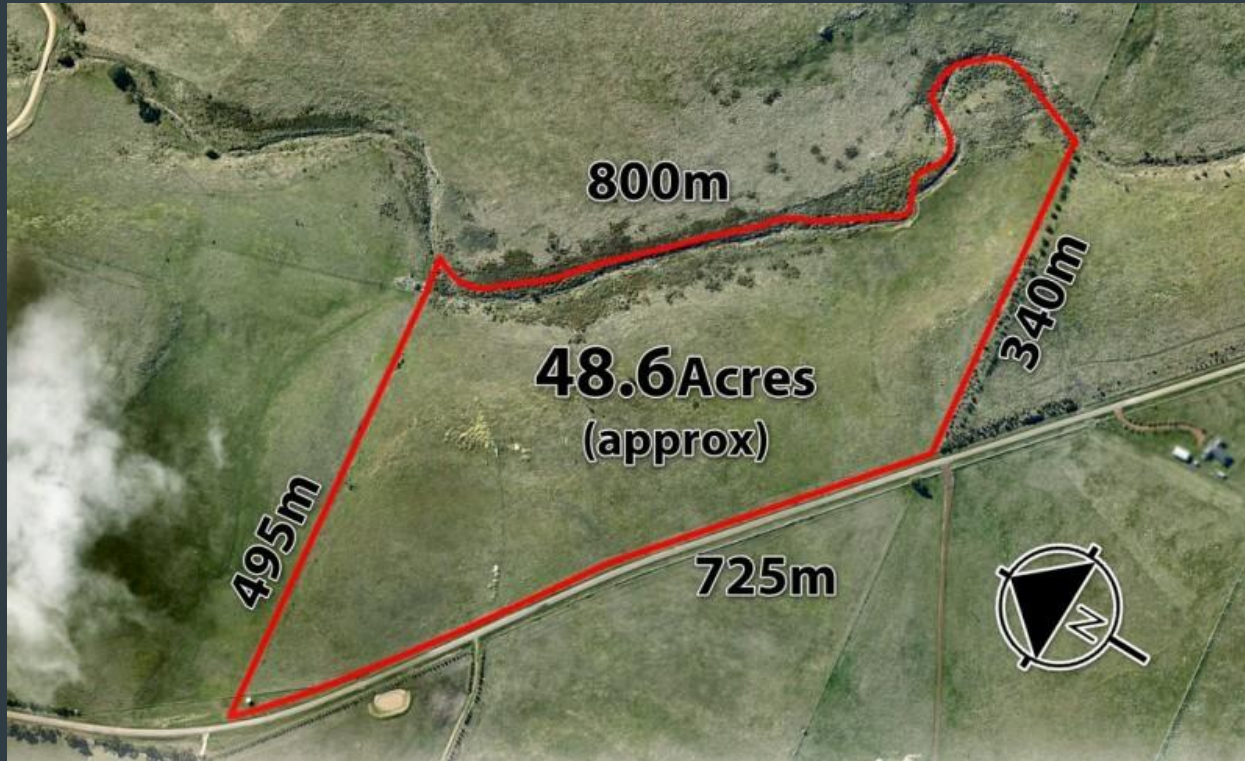
Prime Land with endless lifestyle opportunities

- Approx. 48 acres of land in Toolern Vale.
- Offers fabulous views and a beautiful unspoiled landscape of open grasslands and stands of trees.
- Perfectly positioned on a sealed road with a generous approximately 725m frontage.
- Ideal for farming while presenting exciting potential to build your family dream home.
- Convenience to local townships, being close to Sunbury, Melton, Gisborne South, and Diggers Rest, while offering easy access to freeways.
- 7 mins (approx.) to Diggers Rest.
- 13 mins (approx.) to Sunbury.
- 17 kms (approx.) from Melton.
- 46 kms (approx.) to Melbourne CBD.

Site View



PROPERTY DIMENSIONS



Aerial Views of Property



Want to discuss further



Paul Sharma

Email: psharma@greenlandequity.com.au

Phone: 0405 416 963



Raj Jaswal

Email: raj@greenlandequity.com.au

Phone: 0403 523 366